

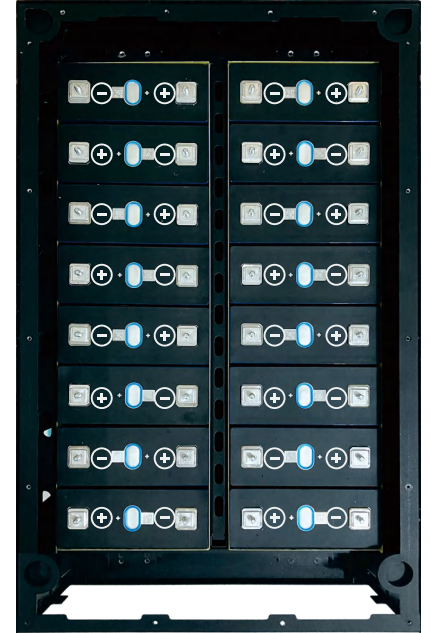
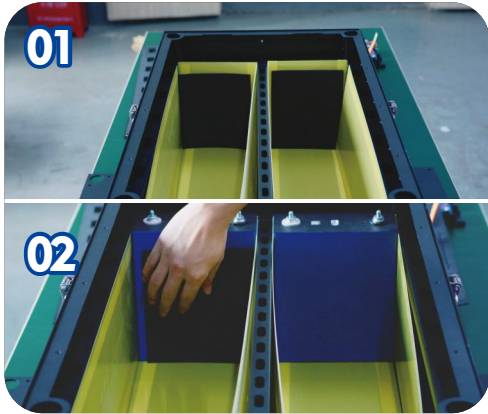
# DIY 280 BOX

## WITH DAREN 200A BMS ASSEMBLING GUIDE

This battery case is suitable for 16pcs LiFePO<sub>4</sub> cells with specifications of 280Ah, 304Ah and 314Ah. We will fully assemble the BMS and the panel before delivery. You may perform secondary connection reinforcement during battery assembly. Please read our installation steps carefully prior to installation.

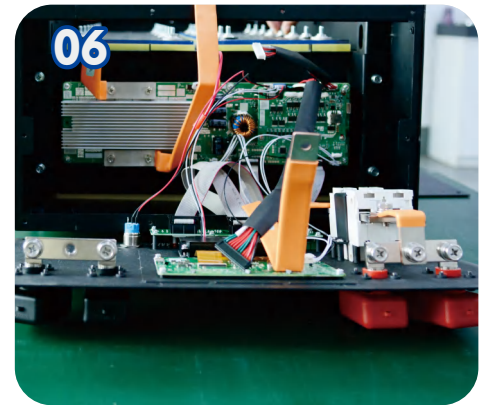
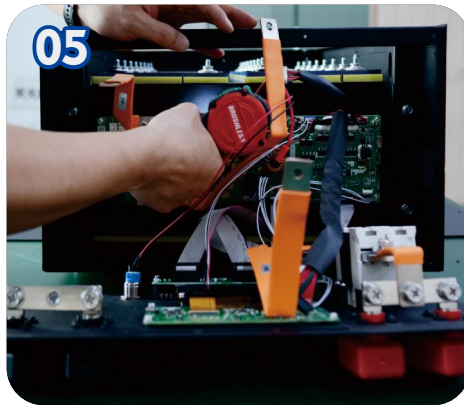
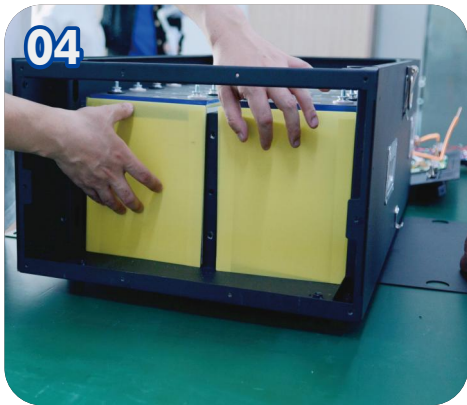
### INSTALL INSULATION PLATES& CELLS

- \* Place the insulating plates at the bottom and around the inner walls of the case.
- \* Arrange the 16 cells in the correct orientation inside the case, and place EVA foam pads between adjacent cells.



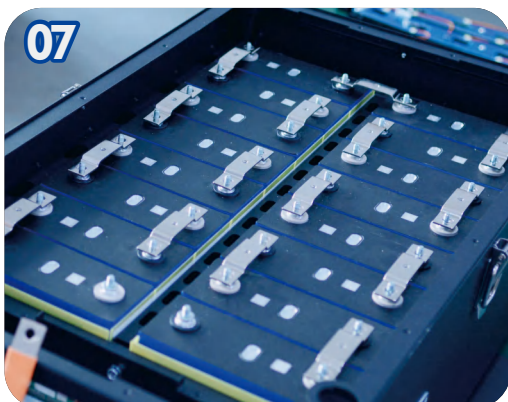
### INSTALL THE BMS

Install the BMS component and tighten the 6 screws securely.



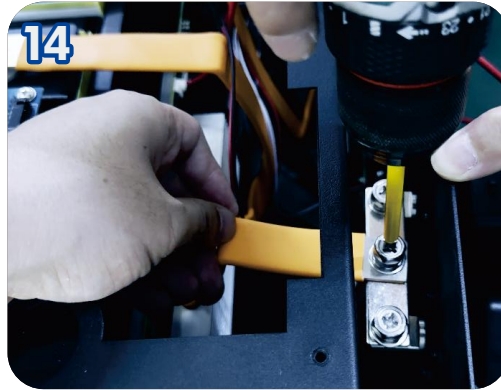
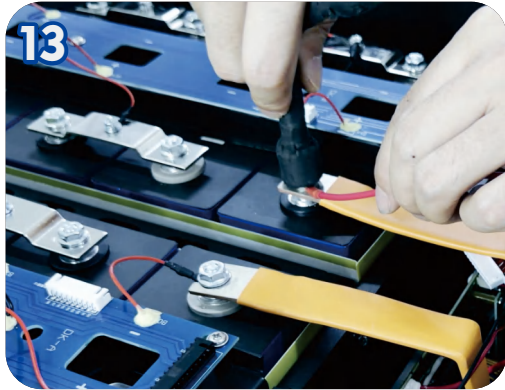
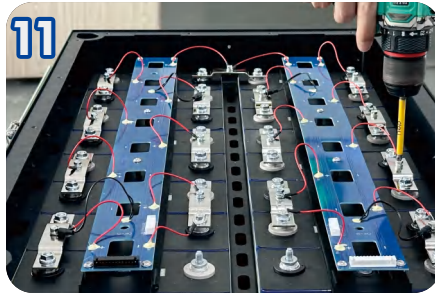
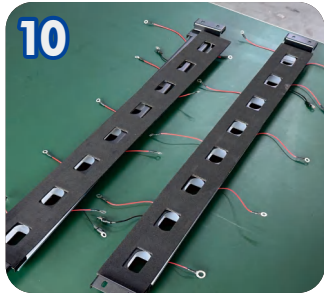
### PLACE WASHERS AND FASTEN

Place the connecting plates and gaskets in the correct order, and fasten them with screws.



## INSTALL THE BMS

Fix the acquisition boards (DK-A and DK-B) in position, and connect the 16 red acquisition wires and 4 black temperature probes.

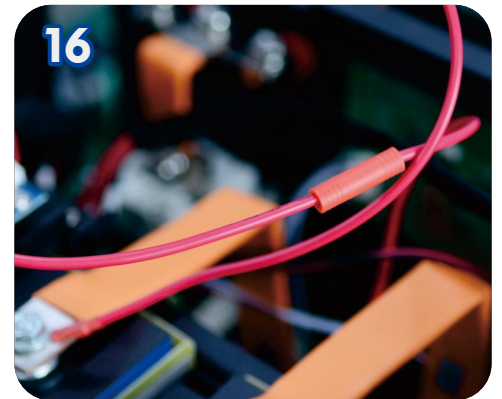
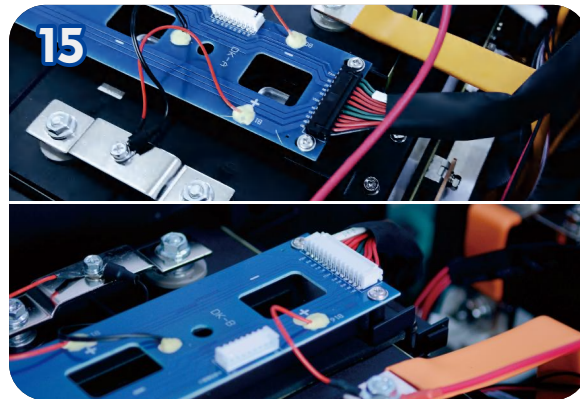


## CONNECT POSITIVE AND NEGATIVE TERMINALS

Connect the main positive and negative terminals of the battery pack. Connect the red BMS power cable to the main positive terminal of the battery pack. Connect the BMS to the P-terminal of the panel.

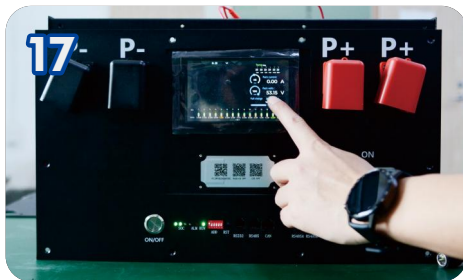
## CONNECT THE ACQUISITION BOARD

Connect the black and white terminals to the acquisition board, and then connect the red BMS power cable.

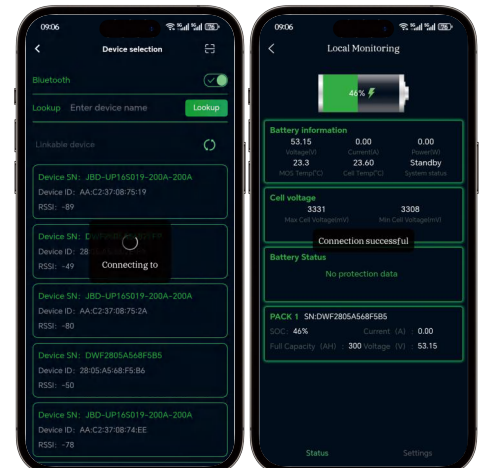


## POWER AND CONNECT TO APP

Power on the system for testing. After confirming normal operation, tighten the panel screws and install the top cover.



BMS Insight



Scan the QR code to download the APP. After opening the APP, scan the Bluetooth QR code on the left side to connect to the battery.