



STAND V3 48V 280 DIY KITS

Assembling Guide

apexium

STEP 1

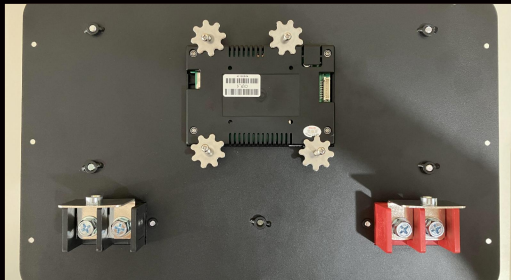
Install wheels, partitions, communication ports, tear off the rubber layer of the insulation board and attach the insulation board to the inside of the chassis.



STEP 2

Install the display, positive and negative terminals, and handrails on the top panel.

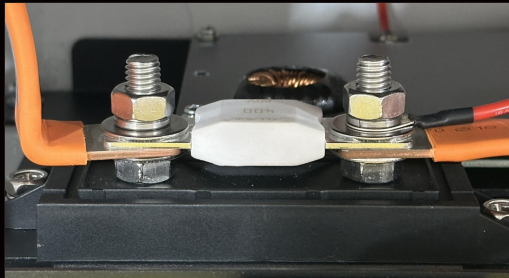
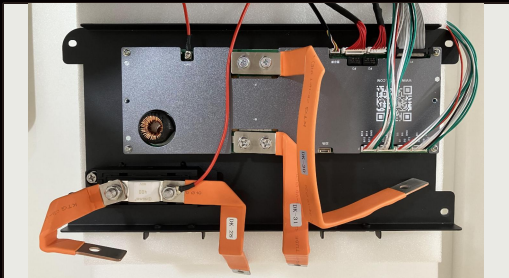
Please ensure that the screws of the terminals are tightened with the same force on both sides.



STEP 3

Install the BMS and fuse wire.

The fuse is in direct contact with busbar.
The BMS heating cable does not need to be connected.



STEP 4

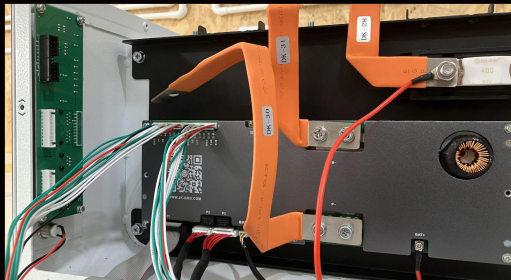
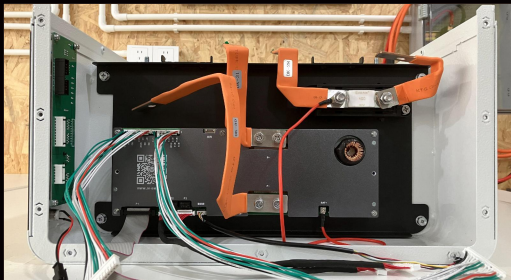
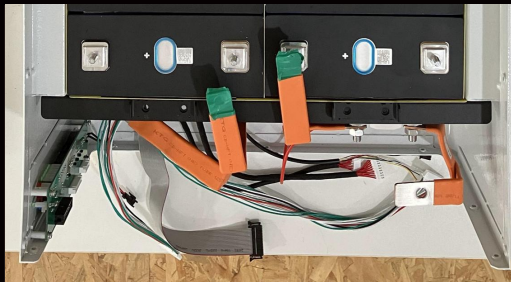
Attach foam and tape to each cell.

Place the cells in the direction specified in the picture.



STEP 5

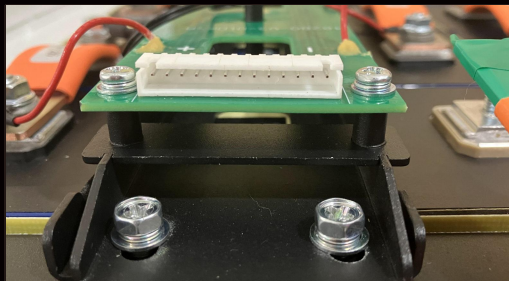
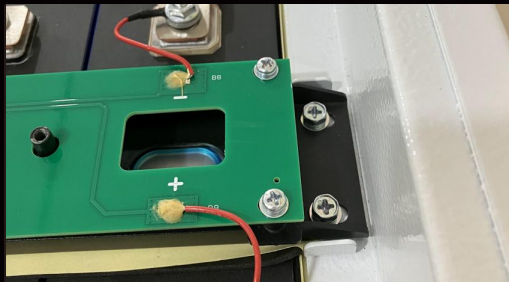
Attach foam and tape to each cell.
Place all cells in the direction specified in the picture.



STEP 6

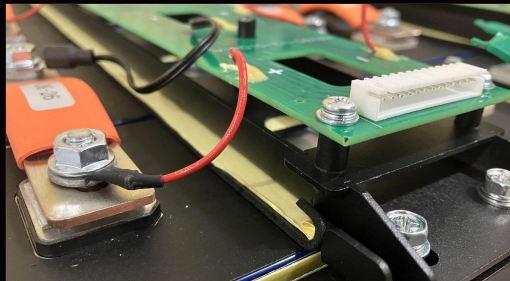
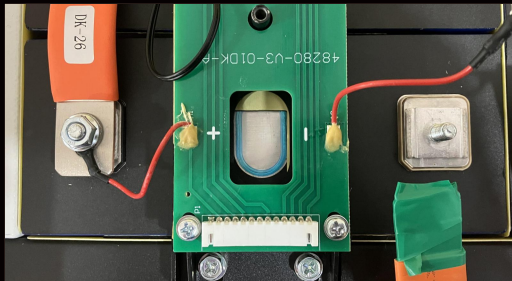
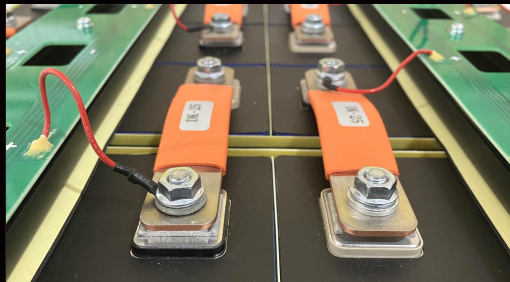
Install the PCB acquisition board and busbars.

Ensure the PCB board is fixed in the correct orientation and connect the acquisition line to the cells.



STEP 7

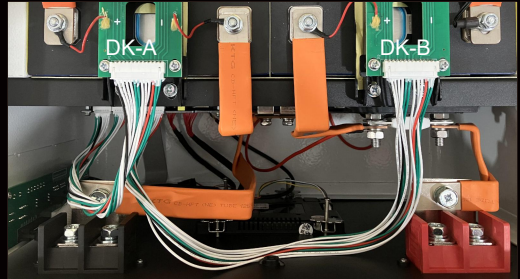
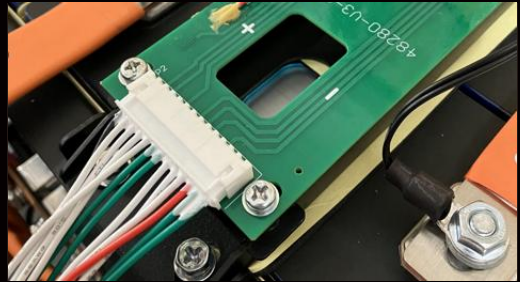
Tighten each screw. If you use a power tool, it is recommended to set it to 7 Nm.



STEP 8

BMS(B1-B8) must be only connected to PCB DK-A
BMS(B9-B16) must be only connected to PCB DK-B

BMS will be damaged if the connections are reversed, and 8th and 9th batteries will not be displayed. We will not provide any after-sales service in this case, hope you can understand.



STEP 9

Turn on the switch and check whether the battery starts normally.

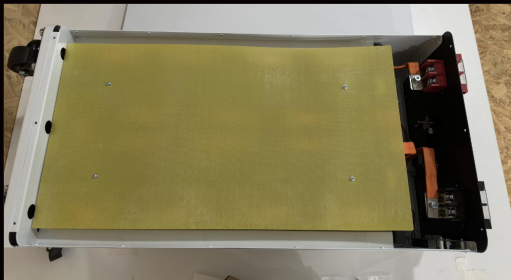
If the display shows 'Alarm' for the first time, this is normal; you just need to connect to the Bluetooth app to change the login password.



STEP 10

After confirming that the battery pack starts properly, install the insulation board and the front cover of the chassis.

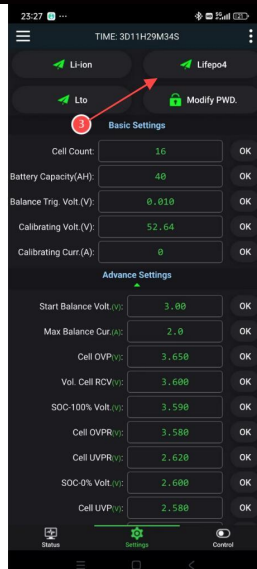
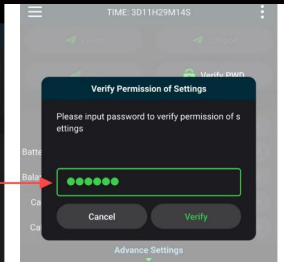
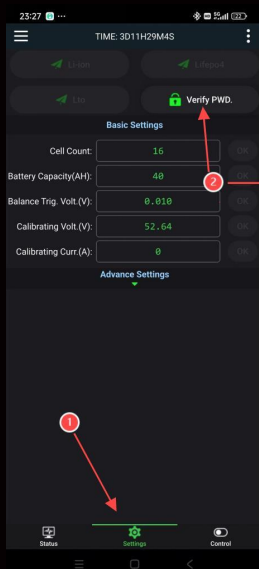
The battery pack installation is now complete.



Notice:

After the battery pack is installed, connect to the BMS via the Bluetooth APP and complete the following operations:

1. Click Settings.
2. Log in (Password: 123456)
3. Select Lifepo4 mode



Download APP

拨码开关设置
(Dip switch Settings)

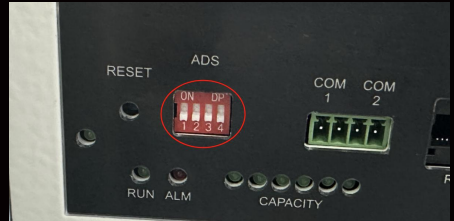
地址(address)	拨码开关位置(Dip switch position)			
	1	2	3	4
0	OFF	OFF	OFF	OFF
1	ON	OFF	OFF	OFF
2	OFF	ON	OFF	OFF
3	ON	ON	OFF	OFF
4	OFF	OFF	ON	OFF
5	ON	OFF	ON	OFF
6	OFF	ON	ON	OFF
7	ON	ON	ON	OFF
8	OFF	OFF	OFF	ON
9	ON	OFF	OFF	ON
10	OFF	ON	OFF	ON
11	ON	ON	OFF	ON
12	OFF	OFF	ON	ON
13	ON	OFF	ON	ON
14	OFF	ON	ON	ON
15	ON	ON	ON	ON

ON
OFF

1 2 3 4

If you use multiple battery packs in parallel, please set the DIP addresses of the master and slave according to the table.

When communicating with the inverter, you only need to set the communication protocol of the master.



The handrail is not sufficient enough to support the weight of the entire complete battery pack; it is intended only for auxiliary push-pull movement. Do not use the handrails to lift the battery pack directly, as this may damage the panel.



The positive and negative terminals can handle a maximum current of 200A. If multiple battery packs are used in parallel and the load exceeds 200A, please use multiple cables in parallel.

